

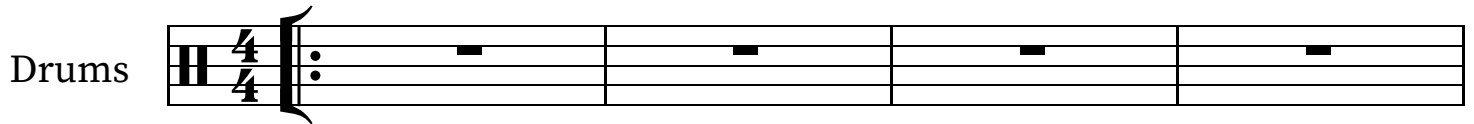
#1 Olives on the Grass

-03 Sino Group

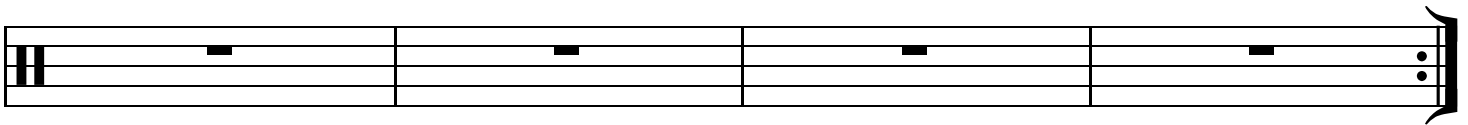
RWL

♩=120

1

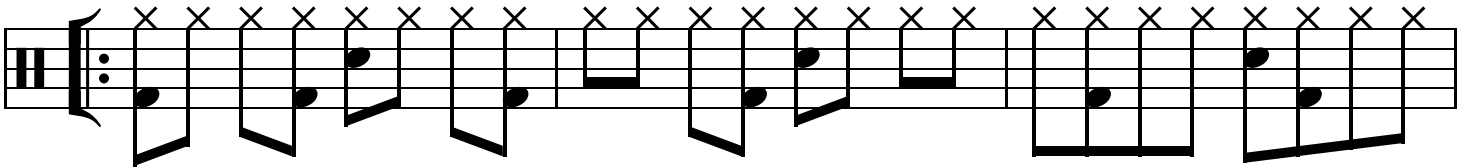


5

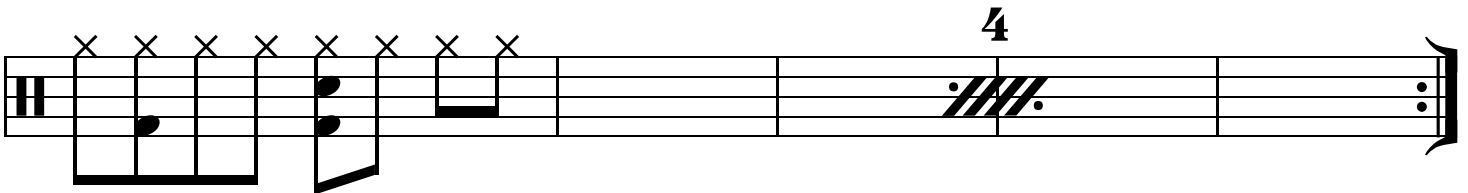


9

2

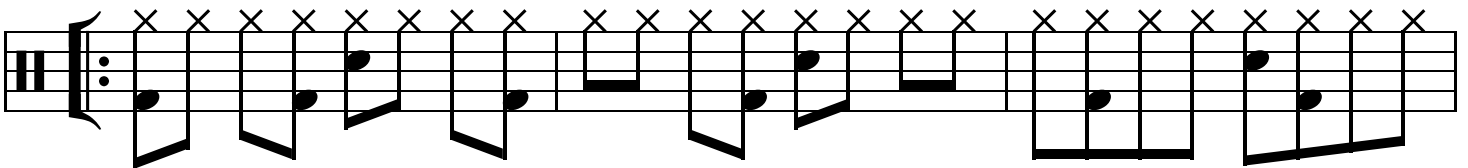


12

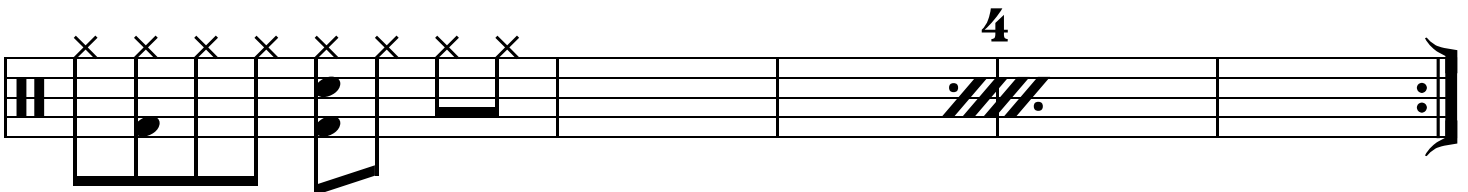


17

3



20



#02 What ties a spirit to a body?

10 Atro Group

RWL

♩=130

Drums

1

disco!

4

9

2

disco!

13

3

16

#03 (cold yoga)

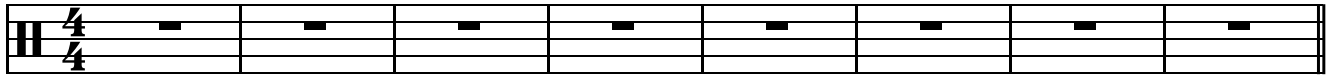
36 Sarcole Group

RWL

♩ = 140

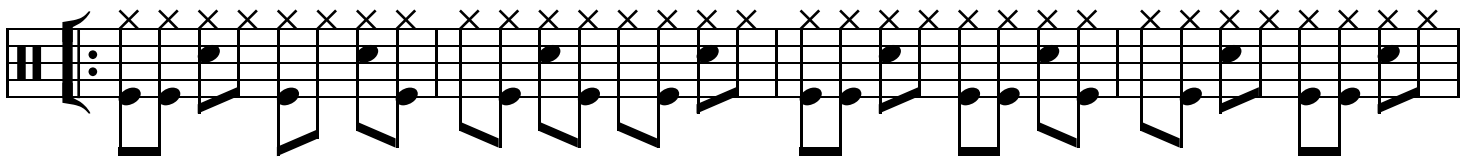
1

Drums

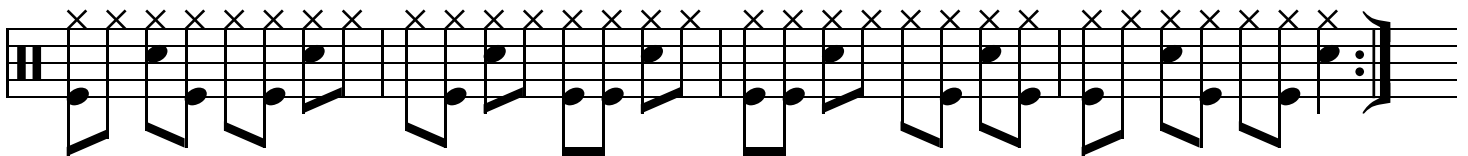


9

2

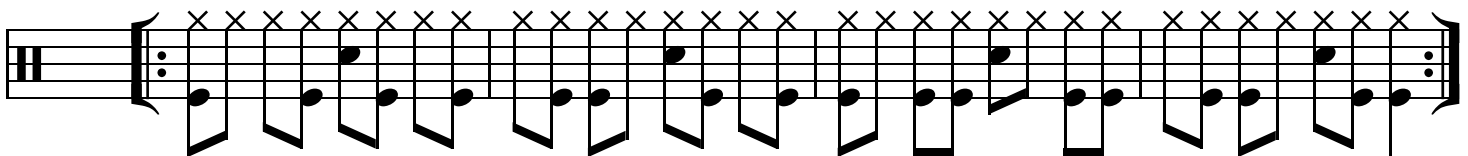


13



17

3



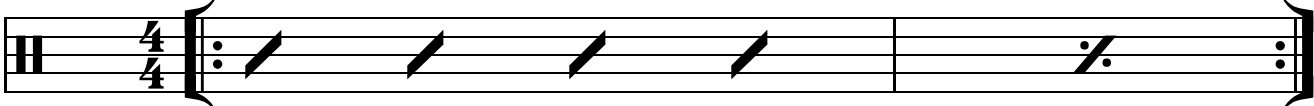
#04 [](feet napkins)

17 Atro Group

RWL

Drums


1



slow, out of time, drunken beat

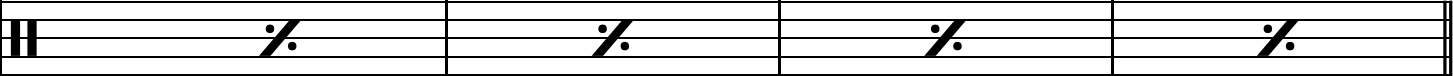
3

2



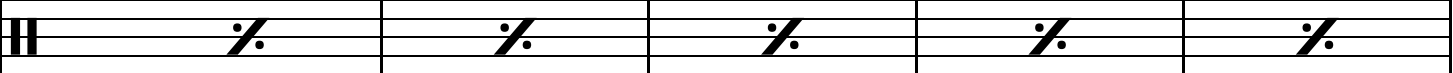
Continue as such...

7

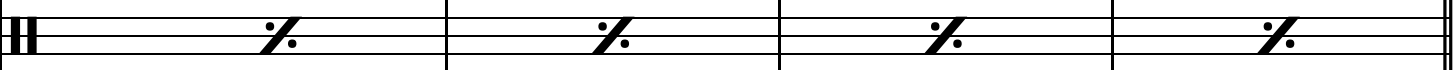


11

3



16



20

4



27



#05 Moonlight on the lizard, Sunlight on the Bat

46 Sarcole Group

RWL

♩ = 120

Intro

Verse 1/2

Drums

Drum notation for measures 1-5. Measures 1-3 are rests. Measure 4 has a double bar line and a repeat sign. Measures 4-5 contain a sequence of notes with 'x' marks above them, indicating a specific drum pattern. Measure 5 ends with a double bar line and a repeat sign.

6

Drum notation for measures 6-11. Measures 6-11 are rests, each ending with a double bar line and a repeat sign.

12

Chorus 1/2

Drum notation for measures 12-19. Measure 12 has four diagonal slashes. Measures 13-19 are rests, each ending with a double bar line and a repeat sign. Measure 19 ends with a double bar line and a repeat sign.

20

Solos/Verse 3

open repeat

Drum notation for measures 20-23. Measures 20-23 contain a sequence of notes with 'x' marks above them, indicating a specific drum pattern. Measure 23 ends with a double bar line and a repeat sign.

24

Final Chorus

Drum notation for measures 24-27. Measures 24-27 contain a sequence of notes with 'x' marks above them, indicating a specific drum pattern. Measure 27 ends with a double bar line and a repeat sign.

#06 Enemies Come

-14 Sino Group

RWL

Bass

1

C

A \flat

5/8

4

F

5/8

#07 it's gone from your liver now

06 Atro Group

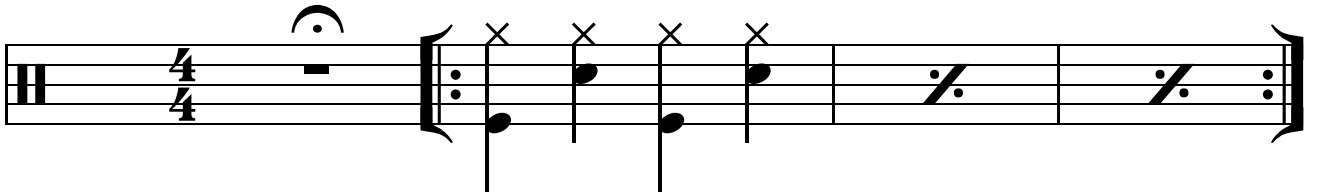
RWL

♩ = 75

1

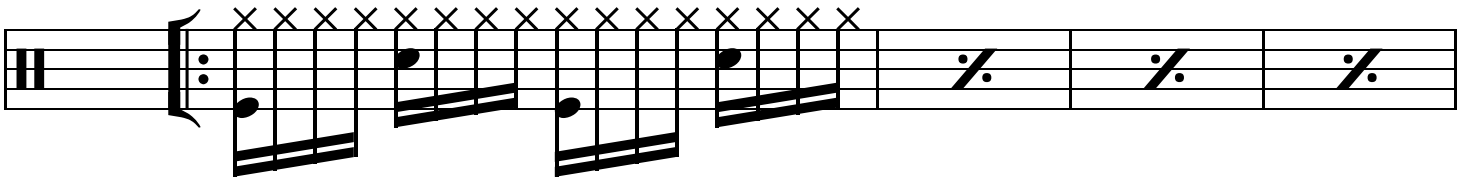
2

Drums



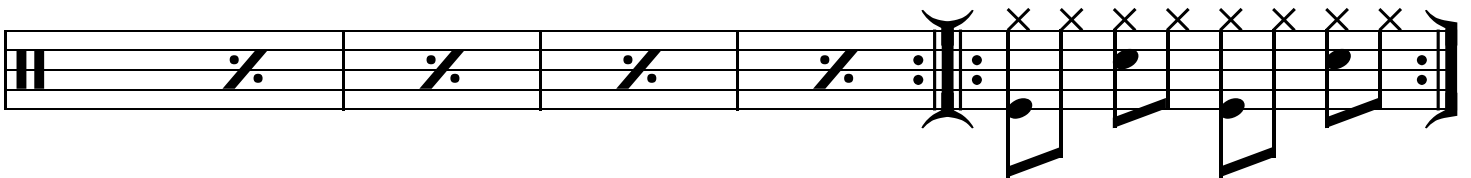
3

5



4

9



#08 (32 reasons)

88 Olver Group

RWL

$\text{♩} = 80$

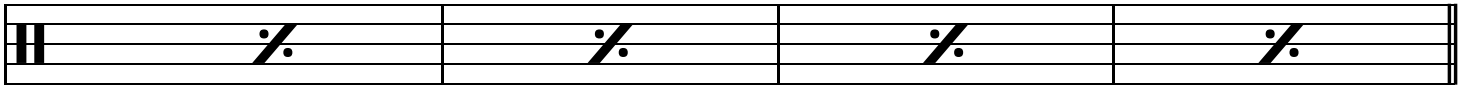
Intro / Chorus

reggaeton style groove

Drums



5

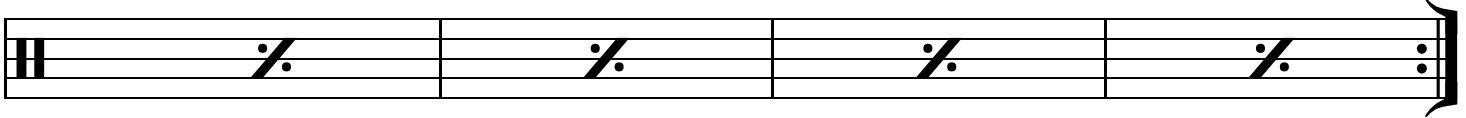


9

Verse 1/2

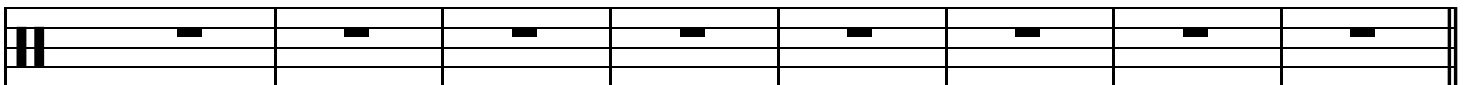


13



17

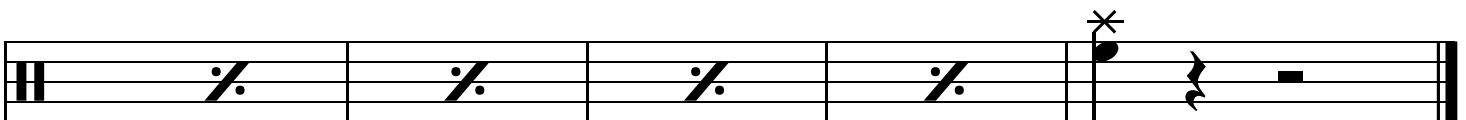
Final Chorus



25



29



#09 Alexander Broccoli and Edgar M'entiendes

18 Atro Group

RWL

$\text{♩} = 120$

Drums

1

1. 2.

6

2

12

17

#10 Solera

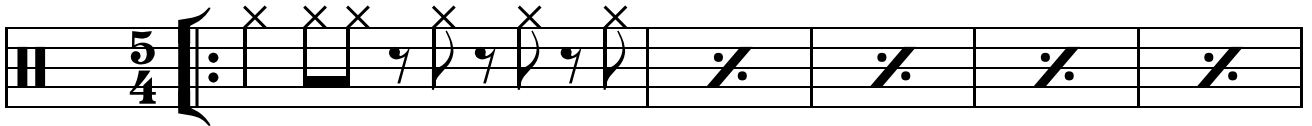
-06 Sino Group

RWL

♩=150

1

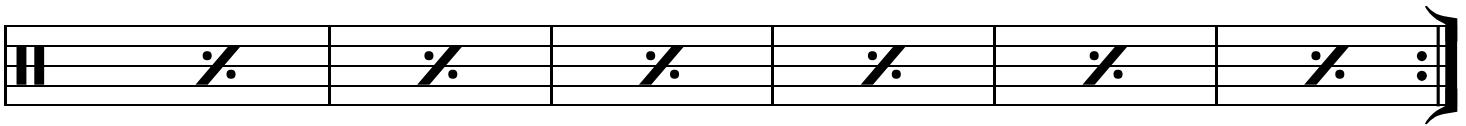
Drums



6 *freely improvise using this frame*



13



#11 Floating Away

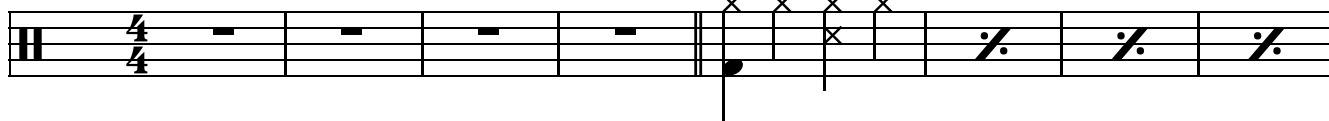
72 Olver Group

RWL

♩ = 120

Verse 1

Drums

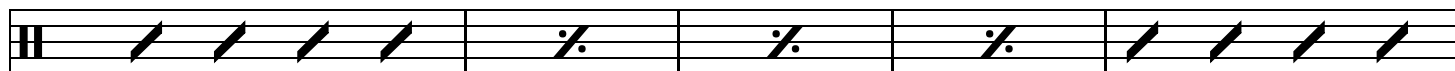


9 (congas enter)

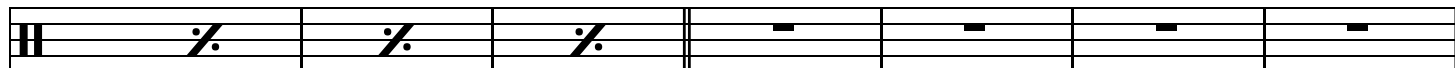
open repeat



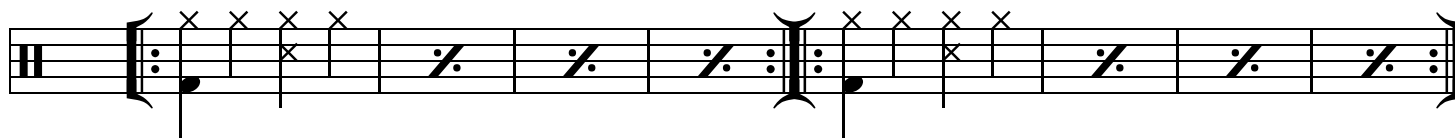
17 Chorus 1



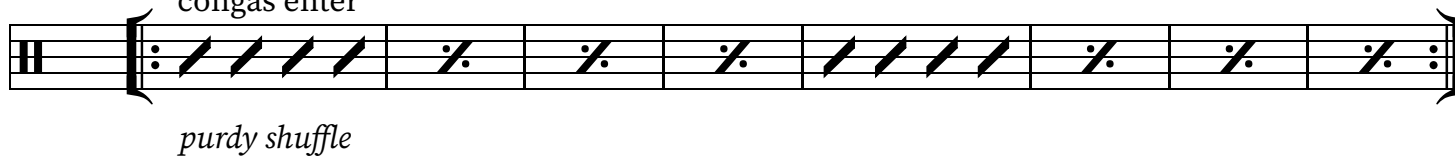
22 transition



29 Verse 2



37 Chorus 2
congas enter



#12 Mr. Yupine Ttoledgious (Big Yup)

14 Atro Group

RWL

$\text{♩} = 60$

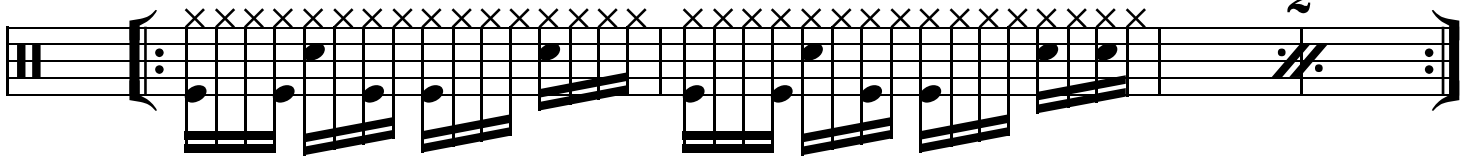
1

Drums



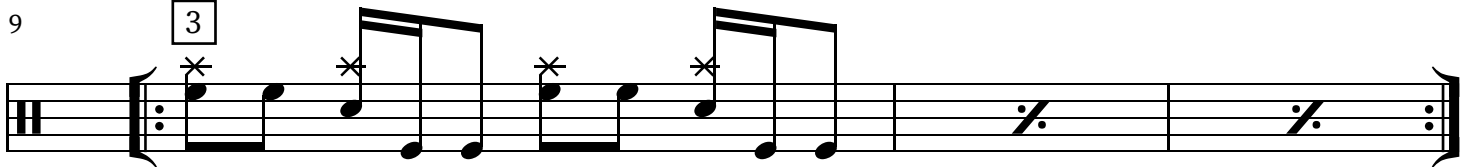
5

2



9

3



12

4

