

Sweet Home Chrome Rose

$\text{♩}=80$ I'm finding a thing..

2

I'm fin ding a thing. That's what I'm do ing now you'll

7

see. You are a wai ter a wai tress. I'm not pay ing for this meal. I can try one of ev ery thing

11

No tip ei ther! I want to see your de di ca__tions to this place. I want to hold

15

the hand of your em plo yer. A boss with hands that were co vered in cha pels. Cha pels

$\text{♩}=90$ that were blowing in the wind

that were blow ing in the wind. Each tem ple had a lou der call than the next.

24

All the sto ries col lec ted by his arm, and there had sprou ted three legs. One for

27

each of the three sides of a tale. Our dead an ces tors can't see what we're see ing now

31 I live along side a bellowing ocean...

but cir cum stan ces do not fa vor these cru cial be ings. I live a long side a bel low

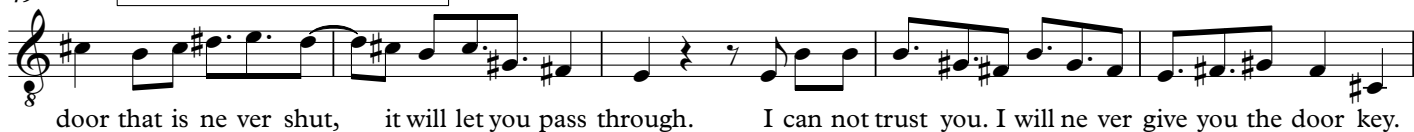
36

ing o cean. I am saved in the ri ver. All de pen den cies lie in the sweet ly carved land line is the

41

sight of the o cean. I am saved in the ri ver. A ges ture of pre sen ting the gift V.S.

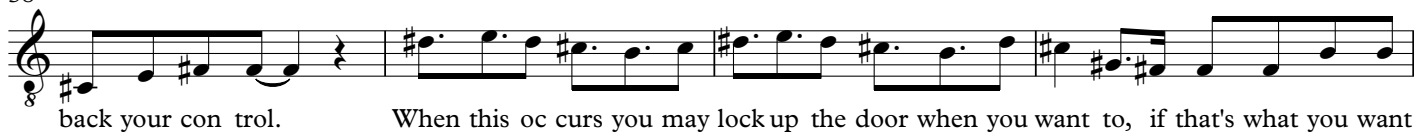
45

49 $\text{♩} = 100$ A solid door that is never shut...

54



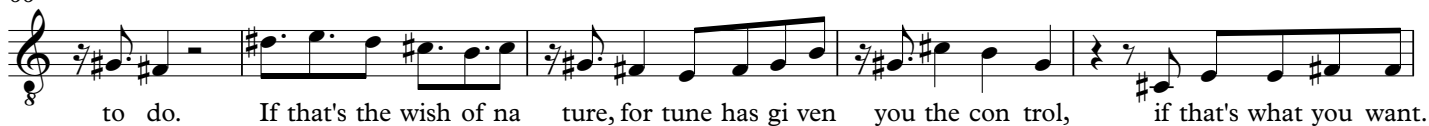
58



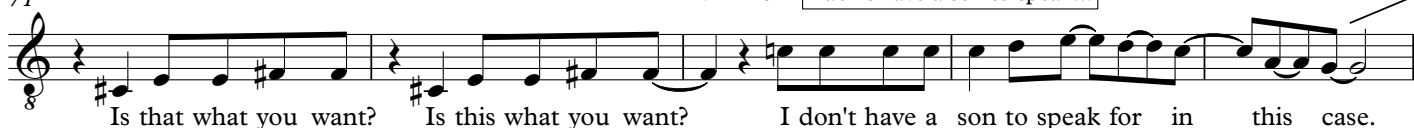
62



66



71

 $\text{♩} = 110$ I don't have a son to speak...76 ♩ 

81



86



91



95
8 they are tall, they will make a con firm a tion out of your wa king soul.

They could make a levitation....

99 $\text{♩} = 120$
8 They could make a le vi ta tion out of the packed silt. They could make a le vi ta

104
8 tion out of a ny thing. They could le vi tate and make some room for us to sing.

109 ...and I'll sing if I want...
8 And I'll sing if I want, and I'll sing if I want. I wish I could go back to the

113
8 first part of this thing, and I can if I want, and I can if I want. I think I know now where

117
8 this is go ing, and I'll go if I want and I'll go if I want. The con tract cuts like a

121
8 bil li on phone calls. You can raise a line, but it ne ver ha shes right. Now

Now Gut the glass cup in search...

125 $\text{♩} = 130$
8 gut the glass cup in search of a so lid branch of oak. Did I get that right?

129
8 May be some of your sun shine will prune and po lish the re mains. It's the taste, it self,

133
8 that has gi ven up. An un com mon ka mi ka ze ma neu ver to sell what's there. Am I get ting V.S.

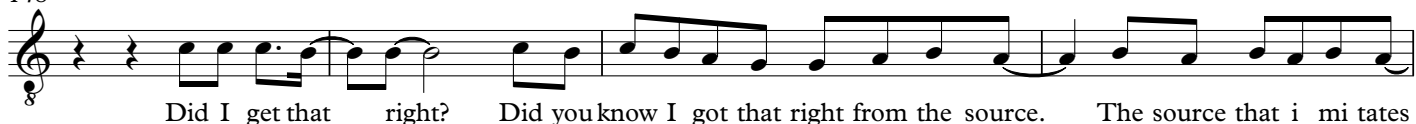
138



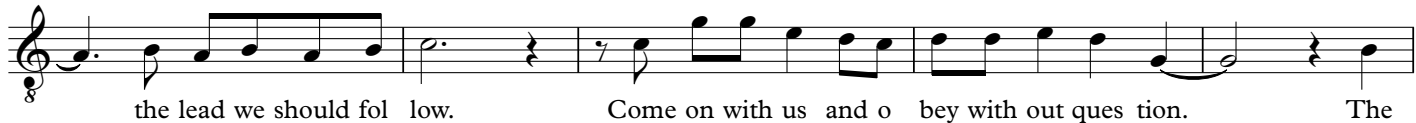
143



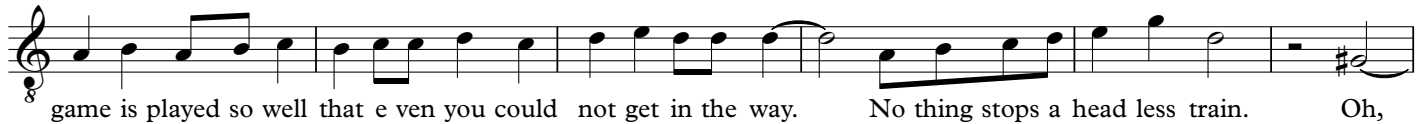
Did I get that right?

148 $\text{♩} = 140$ 

152



157



163



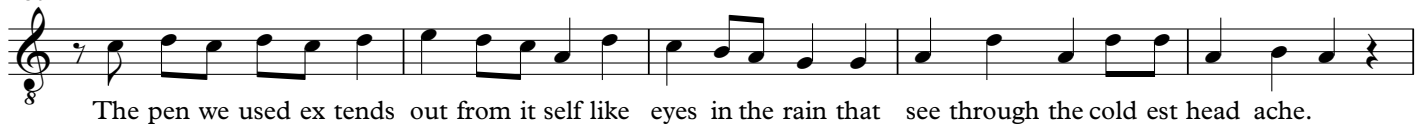
168



Once we have it written down we can forget

175 $\text{♩} = 150$ 


180



185



190



bomb. I will give you my hat if you wear it out in the rain... ...in the rain. ...in the rain.

[illegible]

201

of my lo ver's dust cre ates a skein of can vas. The in tu i tive car pet

208 **♩=160** The intuitive carpet bearers trust

The musical notation is on a single staff with a treble clef and a key signature of one flat (B-flat). The tempo is marked as ♩=160. The lyrics are: 'bear ers trust in the cer tain ty of life as well as death. It's the truth'. The melody consists of quarter and eighth notes, with some phrases grouped by slurs. The lyrics are written below the staff, with some words split across lines (e.g., 'bear ers', 'cer tain ty').

bear ers trust in the cer tain ty of life as well as death. It's the truth

215 **6**

225 You would not believe me **Open Repeat**

The musical notation is on a single staff with a treble clef and a key signature of one flat (B-flat). The melody consists of the following notes: G4 (quarter), F#4 (quarter), E4 (quarter), D4 (quarter), C4 (half), B3 (quarter), A3 (quarter), G3 (quarter), F#3 (quarter), E3 (quarter), D3 (half), C3 (half), B2 (quarter), A2 (quarter), G2 (quarter), F#2 (quarter), E2 (quarter), D2 (half), C2 (half), B1 (quarter), A1 (quarter), G1 (quarter), F#1 (quarter), E1 (quarter), D1 (half), C1 (half), B0 (quarter), A0 (quarter), G0 (quarter), F#0 (quarter), E0 (quarter), D0 (half), C0 (half), B-1 (quarter), A-1 (quarter), G-1 (quarter), F#-1 (quarter), E-1 (quarter), D-1 (half), C-1 (half), B-2 (quarter), A-2 (quarter), G-2 (quarter), F#-2 (quarter), E-2 (quarter), D-2 (half), C-2 (half), B-3 (quarter), A-3 (quarter), G-3 (quarter), F#-3 (quarter), E-3 (quarter), D-3 (half), C-3 (half), B-4 (quarter), A-4 (quarter), G-4 (quarter), F#-4 (quarter), E-4 (quarter), D-4 (half), C-4 (half), B-5 (quarter), A-5 (quarter), G-5 (quarter), F#-5 (quarter), E-5 (quarter), D-5 (half), C-5 (half), B-6 (quarter), A-6 (quarter), G-6 (quarter), F#-6 (quarter), E-6 (quarter), D-6 (half), C-6 (half), B-7 (quarter), A-7 (quarter), G-7 (quarter), F#-7 (quarter), E-7 (quarter), D-7 (half), C-7 (half), B-8 (quarter), A-8 (quarter), G-8 (quarter), F#-8 (quarter), E-8 (quarter), D-8 (half), C-8 (half), B-9 (quarter), A-9 (quarter), G-9 (quarter), F#-9 (quarter), E-9 (quarter), D-9 (half), C-9 (half), B-10 (quarter), A-10 (quarter), G-10 (quarter), F#-10 (quarter), E-10 (quarter), D-10 (half), C-10 (half), B-11 (quarter), A-11 (quarter), G-11 (quarter), F#-11 (quarter), E-11 (quarter), D-11 (half), C-11 (half), B-12 (quarter), A-12 (quarter), G-12 (quarter), F#-12 (quarter), E-12 (quarter), D-12 (half), C-12 (half), B-13 (quarter), A-13 (quarter), G-13 (quarter), F#-13 (quarter), E-13 (quarter), D-13 (half), C-13 (half), B-14 (quarter), A-14 (quarter), G-14 (quarter), F#-14 (quarter), E-14 (quarter), D-14 (half), C-14 (half), B-15 (quarter), A-15 (quarter), G-15 (quarter), F#-15 (quarter), E-15 (quarter), D-15 (half), C-15 (half), B-16 (quarter), A-16 (quarter), G-16 (quarter), F#-16 (quarter), E-16 (quarter), D-16 (half), C-16 (half), B-17 (quarter), A-17 (quarter), G-17 (quarter), F#-17 (quarter), E-17 (quarter), D-17 (half), C-17 (half), B-18 (quarter), A-18 (quarter), G-18 (quarter), F#-18 (quarter), E-18 (quarter), D-18 (half), C-18 (half), B-19 (quarter), A-19 (quarter), G-19 (quarter), F#-19 (quarter), E-19 (quarter), D-19 (half), C-19 (half), B-20 (quarter), A-20 (quarter), G-20 (quarter), F#-20 (quarter), E-20 (quarter), D-20 (half), C-20 (half), B-21 (quarter), A-21 (quarter), G-21 (quarter), F#-21 (quarter), E-21 (quarter), D-21 (half), C-21 (half), B-22 (quarter), A-22 (quarter), G-22 (quarter), F#-22 (quarter), E-22 (quarter), D-22 (half), C-22 (half), B-23 (quarter), A-23 (quarter), G-23 (quarter), F#-23 (quarter), E-23 (quarter), D-23 (half), C-23 (half), B-24 (quarter), A-24 (quarter), G-24 (quarter), F#-24 (quarter), E-24 (quarter), D-24 (half), C-24 (half), B-25 (quarter), A-25 (quarter), G-25 (quarter), F#-25 (quarter), E-25 (quarter), D-25 (half), C-25 (half), B-26 (quarter), A-26 (quarter), G-26 (quarter), F#-26 (quarter), E-26 (quarter), D-26 (half), C-26 (half), B-27 (quarter), A-27 (quarter), G-27 (quarter), F#-27 (quarter), E-27 (quarter), D-27 (half), C-27 (half), B-28 (quarter), A-28 (quarter), G-28 (quarter), F#-28 (quarter), E-28 (quarter), D-28 (half), C-28 (half), B-29 (quarter), A-29 (quarter), G-29 (quarter), F#-29 (quarter), E-29 (quarter), D-29 (half), C-29 (half), B-30 (quarter), A-30 (quarter), G-30 (quarter), F#-30 (quarter), E-30 (quarter), D-30 (half), C-30 (half), B-31 (quarter), A-31 (quarter), G-31 (quarter), F#-31 (quarter), E-31 (quarter), D-31 (half), C-31 (half), B-32 (quarter), A-32 (quarter), G-32 (quarter), F#-32 (quarter), E-32 (quarter), D-32 (half), C-32 (half), B-33 (quarter), A-33 (quarter), G-33 (quarter), F#-33 (quarter), E-33 (quarter), D-33 (half), C-33 (half), B-34 (quarter), A-34 (quarter), G-34 (quarter), F#-34 (quarter), E-34 (quarter), D-34 (half), C-34 (half), B-35 (quarter), A-35 (quarter), G-35 (quarter), F#-35 (quarter), E-35 (quarter), D-35 (half), C-35 (half), B-36 (quarter), A-36 (quarter), G-36 (quarter), F#-36 (quarter), E-36 (quarter), D-36 (half), C-36 (half), B-37 (quarter), A-37 (quarter), G-37 (quarter), F#-37 (quarter), E-37 (quarter), D-37 (half), C-37 (half), B-38 (quarter), A-38 (quarter), G-38 (quarter), F#-38 (quarter), E-38 (quarter), D-38 (half), C-38 (half), B-39 (quarter), A-39 (quarter), G-39 (quarter), F#-39 (quarter), E-39 (quarter), D-39 (half), C-39 (half), B-40 (quarter), A-40 (quarter), G-40 (quarter), F#-40 (quarter), E-40 (quarter), D-40 (half), C-40 (half), B-41 (quarter), A-41 (quarter), G-41 (quarter), F#-41 (quarter), E-41 (quarter), D-41 (half), C-41 (half), B-42 (quarter), A-42 (quarter), G-42 (quarter), F#-42 (quarter), E-42 (quarter), D-42 (half), C-42 (half), B-43 (quarter), A-43 (quarter), G-43 (quarter), F#-43 (quarter), E-43 (quarter), D-43 (half), C-43 (half), B-44 (quarter), A-44 (quarter), G-44 (quarter), F#-44 (quarter), E-44 (quarter), D-44 (half), C-44 (half), B-45 (quarter), A-45 (quarter), G-45 (quarter), F#-45 (quarter), E-45 (quarter), D-45 (half), C-45 (half), B-46 (quarter), A-46 (quarter), G-46 (quarter), F#-46 (quarter), E-46 (quarter), D-46 (half), C-46 (half), B-47 (quarter), A-47 (quarter), G-47 (quarter), F#-47 (quarter), E-47 (quarter), D-47 (half), C-47 (half), B-48 (quarter), A-48 (quarter), G-48 (quarter), F#-48 (quarter), E-48 (quarter), D-48 (half), C-48 (half), B-49 (quarter), A-49 (quarter), G-49 (quarter), F#-49 (quarter), E-49 (quarter), D-49 (half), C-49 (half), B-50 (quarter), A-50 (quarter), G-50 (quarter), F#-50 (quarter), E-50 (quarter), D-50 (half), C-50 (half), B-51 (quarter), A-51 (quarter), G-51 (quarter), F#-51 (quarter), E-51 (quarter), D-51 (half), C-51 (half), B-52 (quarter), A-52 (quarter), G-52 (quarter), F#-52 (quarter), E-52 (quarter), D-52 (half), C-52 (half), B-53 (quarter), A-53 (quarter), G-53 (quarter), F#-53 (quarter), E-53 (quarter), D-53 (half), C-53 (half), B-54 (quarter), A-54 (quarter), G-54 (quarter), F#-54 (quarter), E-54 (quarter), D-54 (half), C-54 (half), B-55 (quarter), A-55 (quarter), G-55 (quarter), F#-55 (quarter), E-55 (quarter), D-55 (half), C-55 (half), B-56 (quarter), A-56 (quarter), G-56 (quarter), F#-56 (quarter), E-56 (quarter), D-56 (half), C-56 (half), B-57 (quarter), A-57 (quarter), G-57 (quarter), F#-57 (quarter), E-57 (quarter), D-57 (half), C-57 (half), B-58 (quarter), A-58 (quarter), G-58 (quarter), F#-58 (quarter), E-58 (quarter), D-58 (half), C-58 (half), B-59 (quarter), A-59 (quarter), G-59 (quarter), F#-59 (quarter), E-59 (quarter), D-59 (half), C-59 (half), B-60 (quarter), A-60 (quarter), G-60 (quarter), F#-60 (quarter), E-60 (quarter), D-60 (half), C-60 (half), B-61 (quarter), A-61 (quarter), G-61 (quarter), F#-61 (quarter), E-61 (quarter), D-61 (half), C-61 (half), B-62 (quarter), A-62 (quarter), G-62 (quarter), F#-62 (quarter), E-62 (quarter), D-62 (half), C-62 (half), B-63 (quarter), A-63 (quarter), G-63 (quarter), F#-63 (quarter), E-63 (quarter), D-63 (half), C-63 (half), B-64 (quarter), A-64 (quarter), G-64 (quarter), F#-64 (quarter), E-64 (quarter), D-64 (half), C-64 (half), B-65 (quarter), A-65 (quarter), G-65 (quarter), F#-65 (quarter), E-65 (quarter), D-65 (half), C-65 (half), B-66 (quarter), A-66 (quarter), G-66 (quarter), F#-66 (quarter), E-66 (quarter), D-66 (half), C-66 (half), B-67 (quarter), A-67 (quarter), G-67 (quarter), F#-67 (quarter), E-67 (quarter), D-67 (half), C-67 (half), B-68 (quarter), A-68 (quarter), G-68 (quarter), F#-68 (quarter), E-68 (quarter), D-68 (half), C-68 (half), B-69 (quarter), A-69 (quarter), G-69 (quarter), F#-69 (quarter), E-69 (quarter), D-69 (half), C-69 (half), B-70 (quarter), A-70 (quarter), G-70 (quarter), F#-70 (quarter), E-70 (quarter), D-70 (half), C-70 (half), B-71 (quarter), A-71 (quarter), G-71 (quarter), F#-71 (quarter), E-71 (quarter), D-71 (half), C-71 (half), B-72 (quarter), A-72 (quarter), G-72 (quarter), F#-72 (quarter), E-72 (quarter), D-72 (half), C-72 (half), B-73 (quarter), A-73 (quarter), G-73 (quarter), F#-73 (quarter), E-73 (quarter), D-73 (half), C-73 (half), B-74 (quarter), A-74 (quarter), G-74 (quarter), F#-74 (quarter), E-74 (quarter), D-74 (half), C-74 (half), B-75 (quarter), A-75 (quarter), G-75 (quarter), F#-75 (quarter), E-75 (quarter), D-75 (half), C-75 (half), B-76 (quarter), A-76 (quarter), G-76 (quarter), F#-76 (quarter), E-76 (quarter), D-76 (half), C-76 (half), B-77 (quarter), A-77 (quarter), G-77 (quarter), F#-77 (quarter), E-77 (quarter), D-77 (half), C-77 (half), B-78 (quarter), A-78 (quarter), G-78 (quarter), F#-78 (quarter), E-78